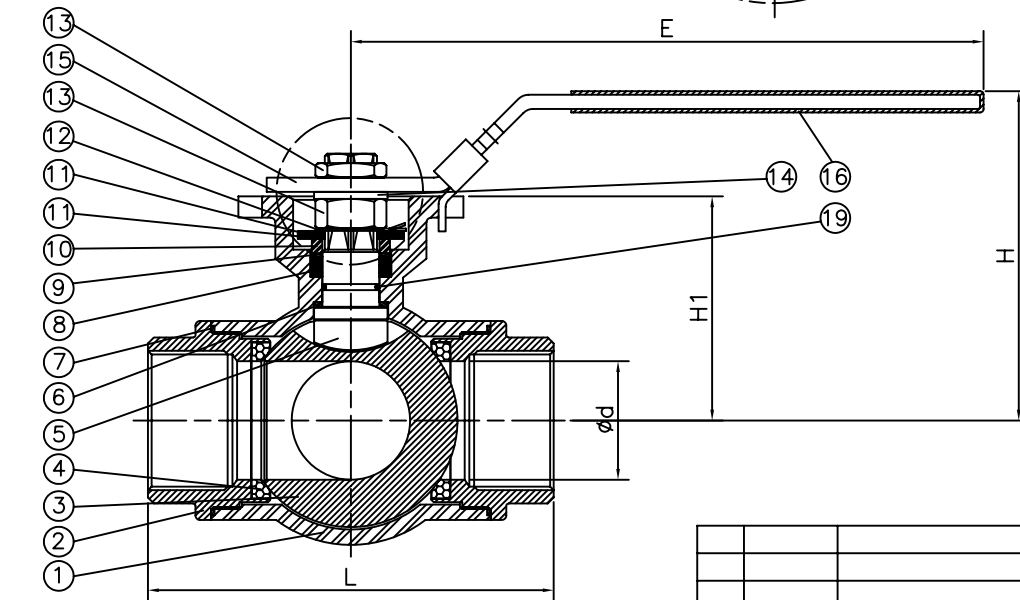
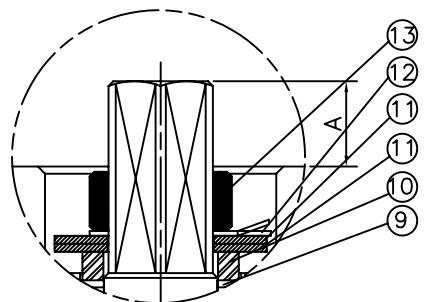
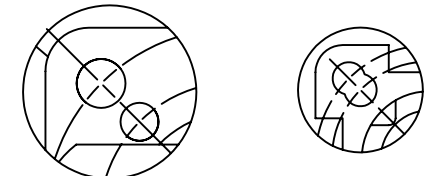
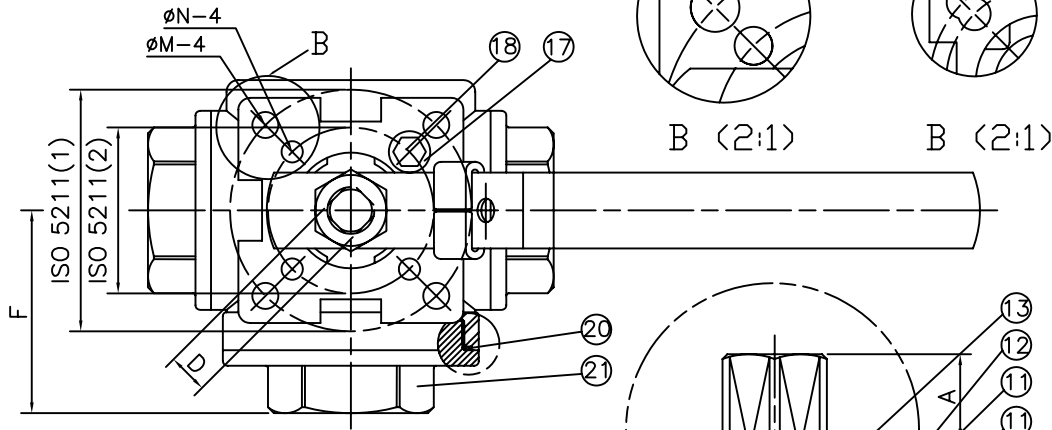


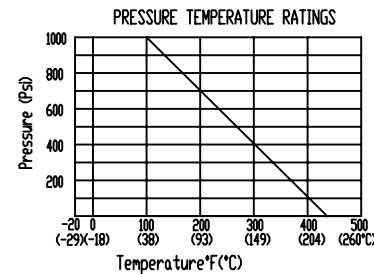
FULL PORT

1 1/4" ~ 2" 1/4" ~ 1"



SIZE	d	L	H	D	F	A	N	M	E	H1	ISO 5211		Torque (in./lb)
											(1)	(2)	
1/4"	11	75.7	64.9	9	38.3	8.2	6	6	132	36.8	F04	F03	28.6
											42	36	
3/8"	11	75.7	64.9	9	38.3	8.2	6	6	132	36.8	F04	F03	28.6
											42	36	
1/2"	16	86.6	71.6	9	44.7	9.0	6	6	132	44.1	F04	F03	43.4
											42	36	
3/4"	20	103	94.3	11	50.8	11.5	6	7	180	55.1	F05	F04	78.1
											50	42	
1"	25	118.2	100	11	57.7	11.5	6	7	180	60.7	F05	F04	147.5
											50	42	
1 1/4"	32	125.8	115.7	14	62.6	15.1	7	9	225	75.2	F07	F05	191
											70	50	
1 1/2"	38	149	124.9	14	74.3	15.1	7	9	225	84.4	F07	F05	330
											70	50	
2"	50	171.2	139	17	85.6	18	9	11	267	94.6	F10	F07	520
											102	70	

NO	DRAW NO	PART NAME	MATERIAL	QTY
1	01	BODY	ASTM A351 Gr.CF8M	1
2	02	CAP	ASTM A351 Gr.CF8M	2
3	03	BALL	ASTM A351 Gr.CF8M	1
4	04	BALL SEATS	PTFE	4/1 SETS
5	05	STEM	S.S.316	1
6	06	THRUST WASHER	PTFE	1
7	07	END SEALS	PTFE	2/1 SETS
8	08	STEM PACKING	PTFE	1 SETS
9	09	THRUST WASHER	TFM1600	1
10	10	GLAND BUSH	S.S.304	1
11	11	BELLEVILLE WASAER	SUS304-CSP	2
12	12	STOP	S.S.304	1
13	13	HANDLE NUT	S.S.304	2
14	14	WASHER	S.S.304	1
15	15	HANDLE	S.S.304	1
16	16	HANDLE SLEEVE	VINYL GRIP	1
17	17	STOPPER	S.S.304	1
18	18	SCREW	S.S.304	1
19	19	O-RING	VITON	1
20	20	END SEALS	PTFE	1
21	21	CAP	ASTM A351 Gr.CF8M	1



PORT TYPE	1	2	3	4
T				
L				

REV	DATE	DESCRIPTION	CODE	REVISER	REMARKS

REV	F
DRAWN BY	Peggy
DATE	2008.05.21
Q'TY	
TITLE	3-WAY THREADED BALL VALVE

3-Way Full Bore Direct Mount 1000 psi

MATERIAL APPROVE CHECK

SCALE FREE UNIT mm

PART NO SP2D

OTHER DWG NO SP2D

AFlow Anson Flow Corp.